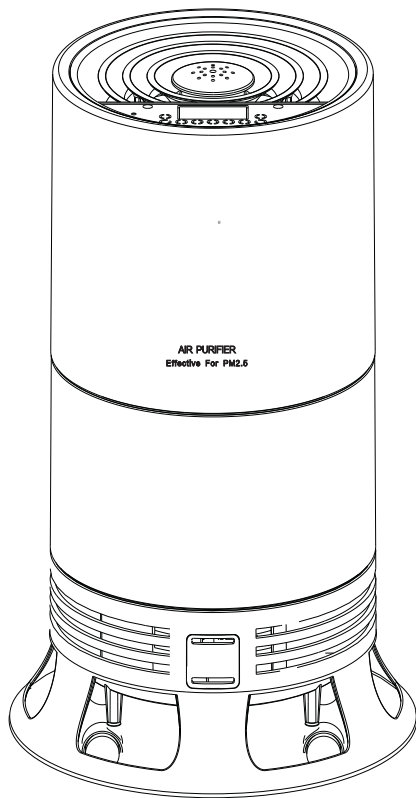


SD-AP180A1

User manual



Specification

Model	SD-AP180A1	Weight	5.3kg
Voltage	AC 120V~	Size	350*350*540mm
Rated Power	24.5±0.5W	Decibel	≤65db
Suitable Area	≤60m³	Power	AC input

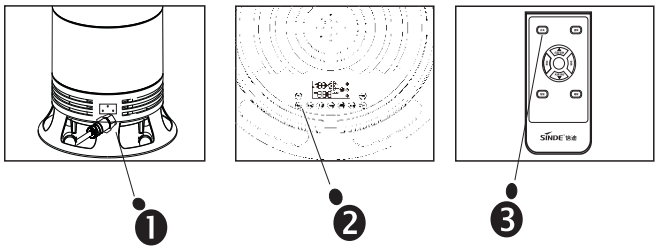
Product description

Air Purifier	1 set	User Manual	1 piece
Power Plug 1.5m	1 piece	Nano PP Air Filter	1 piece
Remote Control	1 piece	Photocatalyst Filter	1 piece
Cotton Pad	1 piece	Activated Carbon	1 piece
Warranty Card	1 piece	Essential Oil	1 bottle

Product Standard configuration

Personalized setting with easy control touch screen. Sleeping mode will operate without light and decibel with automatically drop to suitable range. 12 hours on-off timing setting, PM2.5 and humidity real time monitor are all standard gadgets. 6 layer of purify processes include Nano pp filter, activated carbon, UV sterilization, photocatalyst, negative ion device and aromatherapy. This product also includes a remote control. Furthermore, it has automatic power off function to avoid danger when user open the lid on the back of the product.

Steps



1) Connect power: Power indicator (red light) will blink once power connected.

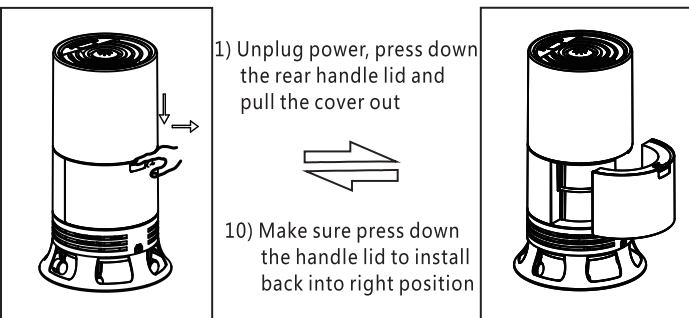
2) Switch on: Press power on-off to switch on and the buzzer will ring one time which indicates that the product is on and power indicator light will keep on red. After power is on, the product is in intelligent mode and it will switch to different fan speeds according to the air quality.

3) Switch off: Press on-off button screen again to switch off.

(1) it is recommended to clean the electron-ion nano-filter net every 1-2 weeks

(2) if it needs to be turned on for 24 hours for a long time, it is recommended to stop the power on for at least 3-5 hours per week.

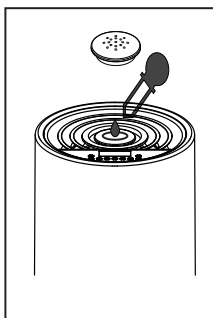
Product efficacy



1) Unplug power, press down the rear handle lid and pull the cover out

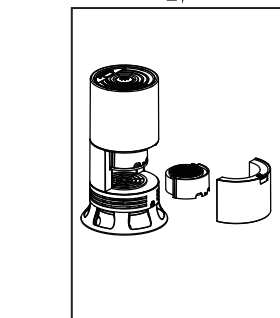
10) Make sure press down the handle lid to install back into right position

9) Push the cover back. 2) This is the air purifier cover



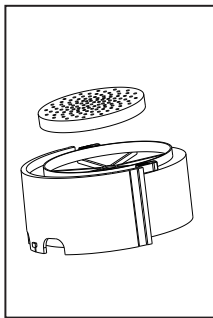
5) Essential oil can be added on the top lid

6) After cleaning, put back the active carbon

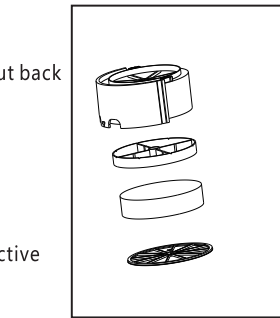


8) Install back to original position

3) Take the bottom filter out and the bottom part is nano PP filter



7) After cleaning, put back nano PP filter



4) Upper part is active carbon filter

Product efficacy

1. Aromatherapy: Aromatherapy device is inside the initial filter grid. Please add essential oil at users choice. Different flavors have various functions.

For example:

- (1) Lavender essential oil: calm, relaxation, improve sleep quality.
- (2) Lemon essential oil: refresh and relaxation.
- (3) Mint essential oil: relief of cold.

2. Sterilization: This product includes a negative ion device which can prevent certain bacteria from growing. Moreover, negative ion devices can make the air fresher.

3. Deodorization: Activated carbon can absorb certain harmful gases such as formaldehyde and benzene.

4. Purification: With a suitable area, the air purifier will use the fan to draw in the polluted air and remove airborne particles to PM2.5, including second hand smoke, etc.

5) UV Light: This product uses non-ozone UV light which will not generate secondary pollution.

6) Photocatalyst: The Photocatalyst utilizes UV light to catalyze which can decompose bacteria. It uses catalysis and oxidation to reach this effect. Because of the photocatalyst, filter doesn't need to be changed. It is good for long-term use.

- (1) Avoid direct exposure to sun. Avoid using air purifier in high temperature environment.
- (2) Please keep the machine flat and avoid putting objects near the air inflow grid.
- (3) When replacing or cleaning the filter, make sure power is off.
- (4) Power must be off when user relocates the air purifier.

Function Indicators

Screen instruction:

PM2.5 display, temperature and humidity display, timer display, wind speed display and air quality facial display.

1) Different fan shapes on the screen represent various wind levels: High-shown 6 fan shape; Medium-shown 4 fan shape; Low-shown 3 fan shape; Sleep mode; shown 2 fan shape

2) PM2.5 Air quality: PM2.5 < 75 UG: Great 75 <= PM2.5 < 150 UG: Normal PM2.5 > = 150 UG: Bad

Sterilization button:

When user presses on intelligent button, while the product is operating, buzzer will ring one time and it will enter intelligent mode. Green light will be shown on the LED screen. The product will switch to different fan speeds according to the air quality. Please note that only in purifying mode, fresh mode and sterilization mode can you enter intelligent mode. Pressing intelligent button again will turn off intelligent mode. Speed button will then light up and enter manual mode.

Fresh button:

When it is in intelligent mode and user presses the fresh button, user will hear a quick beep sound twice (it means user's operation does not work). It will remain in intelligent mode.

When it is in sterilization mode, user can press fresh button to turn on negative ion under manual operation mode. Green light will then turn on and user will hear a beep sound. Press one more time to turn off negative ion. Green light will turn off. This function will not affect the current fan speed under manual operation mode.

Timer button:

Timer off: Press the timer button while the application is on, the buzzer rings once and the timer off sign lights up in green and shows "OFF" in the control panel; To set the time of automatic power off, briefly press the timer button repeatedly (operating by up and down key of handle controller) to adjust the time 1H~12H - OFF (the timer sign will flash 3 times for every adjustment; the timer sign will no longer flash when no operation is done and will default to current time as shown in the panel). The timer starts when the sign no longer flashes and will count down by hour. The application will then power off.

Function Indicators

Sleep button:

When the application is on, press sleep button and user will hear a beep sound. After 30 seconds without other operations, all the indicator lights will turn off. The light will turn back on only if user presses the button on the panel. Child Lock button: When the application is on, the indicator light turns green if user presses the child lock button; To unlock the control panel, press and hold the child lock button for 3 seconds and the user will hear beep sound twice.

Maintenance button:

This product has a cumulative auto warning timer function. When the time is less than 60 hours away, the LED maintenance sign will flash in red, and will emit a warning sound for 60 seconds at hourly intervals until maintenance operation is done. After cleaning the filter, press the maintenance button for 5 seconds, and the filter timer will recover to 1,200 hours and emit a beep sound twice correspondingly.

Wind speed button:

When the application is on, press the intelligent key to enter manual mode. When the wind speed sign turns into green, users can choose the function by briefly pressing the wind speed button and the buzzer will sound once simultaneously. Wind speed adjustment sequence: Moderate, Strong and Rhythm, the LED wind speed sign will show the current shift (as shown below). Under manual mode, the buzzer will alarm when the PM 2.5 reaches higher than 75ug/m³ and user will hear alarm every few minutes. (Users are suggested to turn on the intelligent mode after hearing buzzer sound). If no operation is done in half an hour, the application will switch to intelligent mode automatically and turn on negative ion and UV sterilization function.

Sterilization button:

When it is in intelligent mode and user presses sterilization button, user will hear quick beep sound twice (it means user's operation does not work). It will remain in intelligent mode. User can press sterilization button under manual operation mode for UV sterilization. Green light will then turn on and user will hear a beep sound. Press one more time to turn off UV sterilization. Green light will turn off. This function will not affect the current fan speed under manual operation mode.

Sterilization button:

When it is in intelligent mode and user presses sterilization button, user will hear quick beep sound twice (it means user's operation does